

The 24 V_{DC} and 230 V_{AC} variants are not designed for continuous 100% operation!



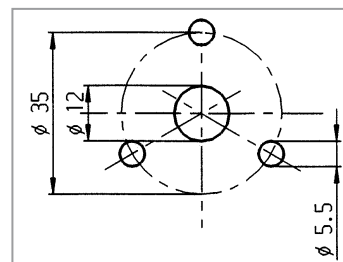
The **Mini-TriOptic** combines all the positive characteristics of the Xenon flash and rotating mirror beacons. Excellent warning properties over short or long distances.

There are many reasons for choosing the **Mini-TriOptic**:

- Lighting technology in Fresnell lens system. This produces 80% greater light visibility. The result: a good warning effect in close range and over long distances.
- The triple-lens technology allows the required blinking frequency of 2-4 Hz to be achieved while only rotating at 1/3 the speed of mirror rotating beacons. The result: The warning beacon stays visible three times longer than usual. This ensures better recognition of the coloured light.
- Outstanding warning effect in rain, snow, fog or sunshine
- Electronic speed regulator
- Small footprint
- Low weight: max. 780 g
- Low-noise, minimal noise during operation
- Protection class: IP 56
- Good price-performance ratio
- Impact-proof color dome



088 027 984-000 (07/09 GB)



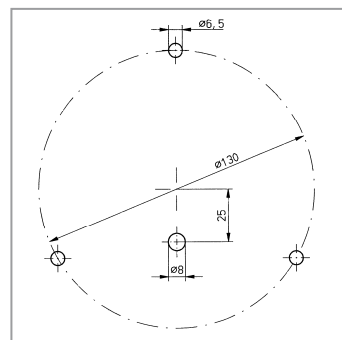
Technical data 3-hole assembly (35mm bolt pattern)

Operating voltage:	12 V _{DC} and 24 V _{DC} and 230 V _{AC}
Current consumption:	at 12 V _{DC} : <5A at 24 V _{DC} : <3A at 230 V _{AC} : <0.3A
Lamp:	"H1" : 12V/55 W or "H1" : 24V/70 W or Bulb E14 : 230 V _{AC} / 60 W
Dome color:	amber, green, red, green/clear
Weight:	approx. 605 g
Dimensions (Ø x h):	131 mm x 163 mm
Approvals:	Light : E1-00491 EMC : e1-023610 Germanischer Lloyd (GL) : 12-021-98HH

Order numbers (3-hole assembly)

002 263 200-651	amber	12 V _{DC}
002 282 607-653	amber	24 V _{DC}
002 282 603-653	green	24 V _{DC}
002 282 609-653	red	24 V _{DC}
002 282 615-653	green/clear	24 V _{DC}
002 282 407-653	amber	24 V _{DC}
with 60 cm connection cable		
002 282 403-653	green	24 V _{DC}
with 60 cm connection cable		
002 282 409-653	red	24 V _{DC}
with 60 cm connection cable		
002 282 415-653	green/clear	24 V _{DC}
with 60 cm connection cable		
002 279 007-653	amber	230 V _{AC}
002 279 003-653	green	230 V _{AC}
002 279 009-653	red	230 V _{AC}
002 279 015-653	green/clear	230 V _{AC}
002 282 107-653	amber	230 V _{AC}
with 60 cm connection cable		
002 282 103-653	green	230 V _{AC}
with 60 cm connection cable		
002 282 109-653	red	230 V _{AC}
with 60 cm connection cable		
002 282 115-653	green/clear	230 V _{AC}
with 60 cm connection cable		

Pintsch Bamag reserves the right to make technical changes.



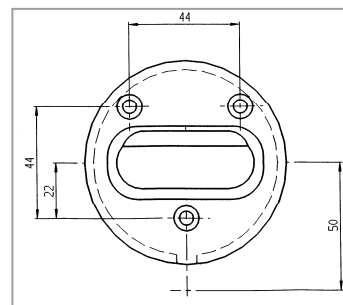
Order numbers (3-hole assembly with adapter)

002 263 200-651	amber	12 V _{DC}
002 282 607-653	amber	24 V _{DC}
002 282 603-653	green	24 V _{DC}
002 282 609-653	red	24 V _{DC}
002 282 615-653	green/clear	24 V _{DC}
002 282 407-653	amber	24 V _{DC}
with 60 cm connection cable		
002 282 403-653	green	24 V _{DC}
with 60 cm connection cable		
002 282 409-653	red	24 V _{DC}
with 60 cm connection cable		
002 282 415-653	green/clear	24 V _{DC}
with 60 cm connection cable		
002 279 007-653	amber	230 V _{AC}
002 279 003-653	green	230 V _{AC}
002 279 009-653	red	230 V _{AC}
002 279 015-653	green/clear	230 V _{AC}
002 282 107-653	amber	230 V _{AC}
with 60 cm connection cable		
002 282 103-653	green	230 V _{AC}
with 60 cm connection cable		
002 282 109-653	red	230 V _{AC}
with 60 cm connection cable		
002 282 115-653	green/clear	230 V _{AC}
with 60 cm connection cable		

Technical data 3-hole assembly (130mm bolt pattern)

Operating voltage:	12 V _{DC} and 24 V _{DC} and 230 V _{AC}
Current consumption:	at 12 V _{DC} : <5A at 24 V _{DC} : <3A at 230 V _{AC} : <0.3A
Lamp:	"H1" : 12V/55 W or "H1" : 24V/70 W or Bulb E14 : 230 V _{AC} / 60 W
Dome color:	amber, green, red, green/clear
Weight:	approx. 714 g
Dimensions (Ø x h):	131 mm x 170 mm
Approvals:	Light : E1-00491 EMC : e1-023610 Germanischer Lloyd (GL) : 12-021-98HH

Pintsch Bamag reserves the right to make technical changes.



Technical data wall-mounted

Operating voltage:	24 V _{DC} and 230 V _{AC}
Current consumption:	at 24 V _{DC} : <3A at 230 V _{AC} : <0.3A
Lamp:	"H1" : 24V/70 W or Bulb E14 : 230 V _{AC} / 60 W
Dome color:	amber, green, red, green/clear
Weight:	approx. 714 g
Dimensions (Ø x h):	131 mm x 170 mm
Approvals:	Light : E1-00491 EMC : e1-023610 Germanischer Lloyd (GL) : 12-021-98HH

Order numbers (wall-mounted)

002 282 307-653 with 60 cm connection cable	amber 24 V _{DC}
002 282 303-653 with 60 cm connection cable	green 24 V _{DC}
002 282 309-653 with 60 cm connection cable	red 24 V _{DC}
002 282 315-653 green/clear with 60 cm connection cable	24 V _{DC}
002 282 007-653 with 60 cm connection cable	amber 230 V _{AC}
002 282 003-653 with 60 cm connection cable	green 230 V _{AC}
002 282 009-653 with 60 cm connection cable	red 230 V _{AC}
002 282 015-653 green/clear with 60 cm connection cable	230 V _{AC}

Pintsch Bamag reserves the right
to make technical changes.