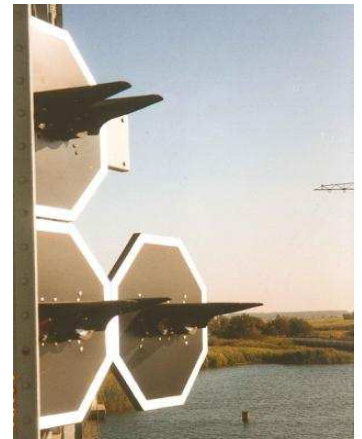




Order-Number  
008 435 0XX-616



#### Application

Signal lantern for the usage as traffic signal on locks or bridges and as leading light for the marking of fairways, channels, harbor entries.

The **PINTSCH BAMAG** lock signal type **S 145 LED** is used as a signal lantern in vessel traffic signs for the operation as traffic signal for locks or bridges and as traffic guidance in water channels. The LED technology combines low power consumption with high light output and long service life and guarantees long maintenance intervals. The signal lantern is available with different distribution lenses and in different light colours (clear, red, green).

The signal is equipped with a bracket to install a telescope for adjustment. Fixing points are at the housing to install the lantern in traffic sign panels.

The signal lantern can be operated at 12-30 V<sub>DC</sub> directly. Alternative it can be operated at 7,5 V<sub>AC</sub>–15 V<sub>AC</sub> too. The change over from day to nighttime light intensity will done automatically, if the supply voltage is lower than 10 V<sub>AC</sub> or 14.5 V<sub>DC</sub> and will switch back to daytime light intensity if the supply voltage is higher than 12 V<sub>AC</sub> or 16.5 V<sub>DC</sub>. The change over from day to night-time operation can be activated via a digital input also. The light intensity for the day and night-time operation can be selected in 4-levels.

#### Standard version:

- Operating life of the LED up to 100,000 hours
- Monitoring of each individual LED
- Failure output
- Processor controlled monitoring of the LED temperature directly at the heat sink.
- Control input for reducing light intensity during nighttime.
- Selectable day-/nighttime light intensity via DIP switch
- Control input for switching ON/OFF signal lights
- Bracket for telescope

#### Optional:

- Additionally lenses to increase horizontal distribution
- Dummy load for simulating standard lamp bulb



A08 435 000-954 (05/09 GB)

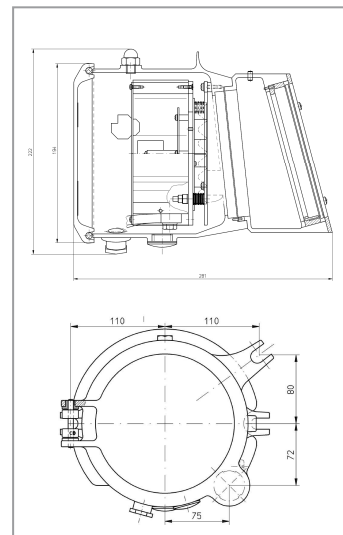
## Technical data

Input voltage range:	12 - 30 V <sub>DC</sub> 7,5 - 15 V <sub>AC</sub>
Input voltage for daytime:	>12 V <sub>AC</sub> / 16.5 V <sub>DC</sub>
Input voltage for nighttime:	<10 V <sub>AC</sub> / 14.5 V <sub>DC</sub>
Power consumption:	4 - 20 W, depending on colour and mode of operation
Quiescent current:	<5mA
Signal colour:	white, green, red IALA Optimum (according IALA E-200-1, On Marine Signals Lights – Colors)
Recommendation	
Operating temperature:	-25° ... +50° C
Storage a. transport:	-30° ... +70° C
Rel. humidity:	max. 98%
Protection class:	IP54 (acc. DIN EN 60529 VDE 0470 part 1)
EMC:	DIN EN 60945, 2003-07
Dimension (Ø x h):	222 x 281 mm

## Shipping data (approx.):

Net weight:	8 kg
Shipping weight:	10 kg
Shipping volume:	0.03 m <sup>3</sup>

## Dimensions



## Photometric data (stationary light intensity)

LED colour	light intensity $I_0$ [cd]	Angle of divergence at 50% of $I_0$ Horizontal / Vertical [°] / [°]	Angle of divergence at 10% of $I_0$ Horizontal / Vertical [°] / [°]
white	7.000	8/8	19/19
red	8.000	8/8	20/20
green	8.000	9/9	21/21

Alterations reserved