



Order-Number  
002 280 00X-618

#### Application

Leading lantern for the marking of fairways, channels or harbor entries.

#### Standard version:

- electronic flasher
- 6-place lampchanger
- Lamps wattage up to 120 W
- Daylight sensor
- Synchronization ability
- protection class IP65

#### Optional:

- adjustment kit for horizontal adjustment of lantern
- lens with vertical grooves to increase horizontal distribution
- bubble level indication
- Synchronization by GPS, cable or radio

The **PINTSCH BAMAG** leading light lantern type **EER 130** is composed of a steel frame, a stainless steel box and an optical system. The different components like flasher, lampchanger, the optical system are installed in a watertight stainless steel box with lockable door at one side.

Range and distribution of light can be changed by selecting different sizes of lamps and between 3 types of lenses (Type A, B or C). A mirror is placed in rear of the lamp to increase the light intensity. The box is fastened at a steel supported frame where optionally an adjustment device can be fixed (adjustment by telescope).

The standard type is equipped with an 6-place lampchanger and an electronic flasher (256 different light characters) for a lamp wattage up to 120 W.



A08 237 006-954 (02/09 GB)

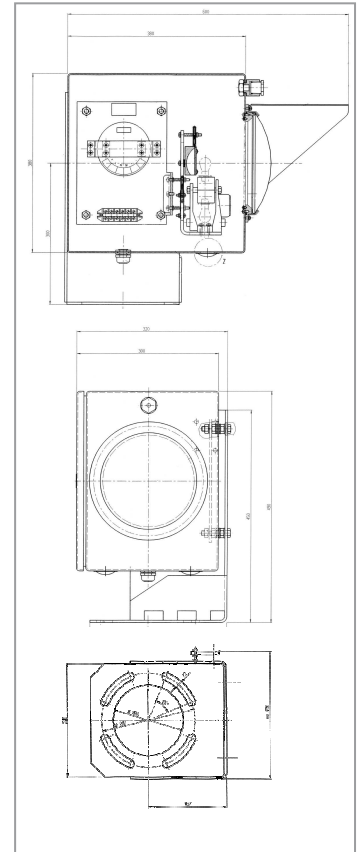
## Technical data

Input voltage range:	10 – 30 V <sub>DC</sub>
Operating temperature:	-25° ... +55° C
Storage & Transport:	-30° ... +70° C
Rel. Humidity:	max. 98%
Protection class:	IP65 (according DIN 40050)
Dimensions (l x b x h):	600 x 300 x 490 mm
Focal height:	300 mm
Lens material:	Glass
Housing material:	Stainless steel
Fastening holes:	4 x Ø 17 mm
Bolt hole circle:	Ø 200 mm

## Shipping data (approx.)

Net weight:	25 kg
Shipping weight:	35 kg
Shipping vol.:	0.7 m <sup>3</sup>

## Dimensions



## Photometric data (stationary light intensity for white light)

Halogen lamp <sup>1</sup> 12 Volt	light intensity I <sub>0</sub> [cd]			Angle of divergence at 50% of I <sub>0</sub> Horizontal / Vertical [°] / [°]			Angle of divergence at 10% of I <sub>0</sub> Horizontal / Vertical [°] / [°]		
	Type A	Type B	Type C	Type A	Type B	Type C	Type A	Type B	Type C
5 W	14.000	1.200	730	0.7 / 0.7	9.4 / 1.2	17 / 1.5	2.8 / 2.4	12 / 3.4	22 / 4
10 W	25.500	2.800	1.400	0.9 / 1.2	9.4 / 1.2	17 / 1.6	3.1 / 2.9	12 / 3.6	22 / 4
20 W	70.000	6.300	3.200	0.8 / 1.2	9.1 / 1.2	17 / 1.5	2.8 / 2.6	12 / 3.6	23 / 4
35 W	105.000	11.400	6.000	0.9 / 1.4	9.2 / 1.2	17 / 1.6	3 / 2.9	12 / 3.6	23 / 4
50 W	100.000	12.800	6.700	1.3 / 1.6	9.1 / 1.8	17 / 2.2	3.4 / 3.7	12 / 4.3	23 / 5
100 W	178.000	33.000	17.000	1.7 / 1.9	9.3 / 1.9	18 / 2.1	4 / 3.7	12 / 4.3	23 / 5

<sup>1</sup> halogen lamps with vertical filament

Alterations reserved