



Order-Number
4-002 460 001-616



Application

Signal lantern for the usage as traffic signal on locks or bridges and as leading light for the marking of fairways, channels, harbor entries.

The **PINTSCH BAMAG** lock signal type **S 145** is used as a signal lantern in vessel traffic signs for the operation as traffic signal for locks or bridges and as traffic guidance in water channels. The signal lantern is available with different distribution lenses and different colours (clear, red, green).

The signal is equipped with a device to install a telescope for adjustment. Fixing points are at the housing to install the lantern in Traffic sign panels.

The lock signal type **S 145** is a signal lantern composed of one optical system with a 136 mm lens, a reflector and a signal lamp SIG 1255 installed in a lantern housing.



A02 460 001-954 (05/09 GB)

Technical data

Signal lamp: 12V/55 W
 Lamp bulb socket: BA20d
 Signal colour: white, green, red
 Recommendation: IALA Optimum (according IALA E-200-1, On Marine Signals Lights – Colors)

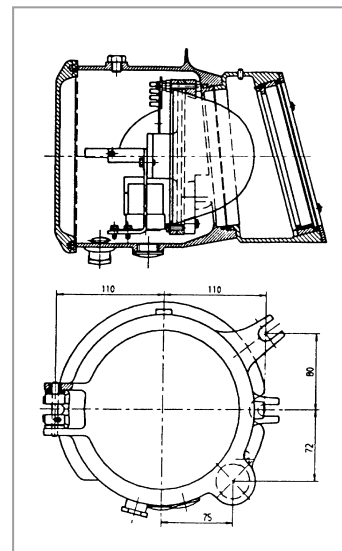
Environment:

Operating temperature: -25° ... +55° C
 Storage a. transport: -30° ... +70° C
 Rel. humidity: max. 98%
 Protection class: IP54 (acc. DIN EN 60529 VDE 0470 part 1)
 EMC: DIN EN 60945, 2003-07
 Dimension (Ø x h): 222 x 281 mm

Shipping data (approx.):

Net weight: ca. 8 kg
 Shipping weight: ca. 10 kg
 Shipping volume: ca. 0.03 m³

Dimensions



Photometric data (stationary light intensity for white¹ light)

Signal lamp	light intensity I_0 [cd]	Angle of divergence at 50% of I_0 Horizontal / Vertical [°] / [°]	Angle of divergence at 10% of I_0 Horizontal / Vertical [°] / [°]
12V/55 W	100.000	4/2	6/3

¹ Multiply by 0.26 for green and red 0.26 light and by 0.55 for yellow 0.55 light

Alterations reserved