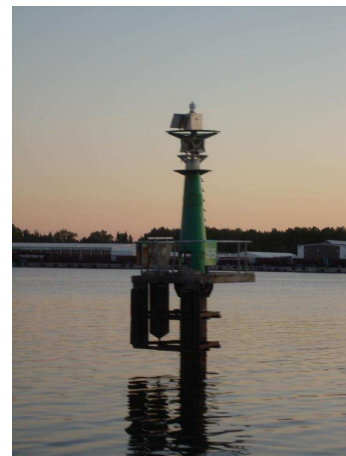




Order-Number
002 280 00x 618



Application

Marking of shore lines, fairways,
piers and fixed marine
obstructions.

The **PINTSCH BAMAG** solar compact beacon type **EBS** is a self contained solar power supply and can be equipped with a marine lantern of different types i.E **EE 155**, **LEDmin** or **LEDmax**. It is intended for use on fixed navigational aids. The battery cabinet is made of stainless steel and provides ventilation elements for sufficient air exchange. Solar charge regulator and maintenance-free PB-Gel VLRA battery are integrated into the housing. The solar module is mounted at one side and the mounting angle is carried out according to the customer request.

- Stainless steel
- Solar modules up to 150pW
- Solar charge regulator
- Maintenance-free PB-Gel battery, service life
- Cabinet, stainless steel
- UV and seawater resistant
- Degree of protection IP54

Optional:

- Radar reflector

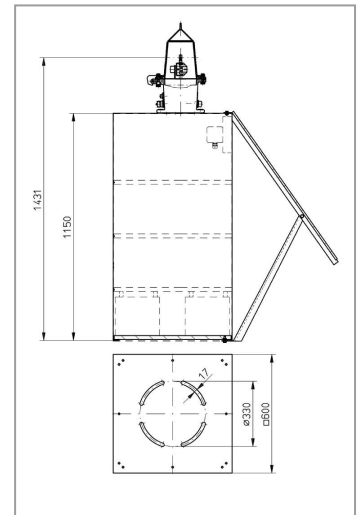


A08 280 000-954 (04/09 gb)

Technical data

Nominal voltage:	12 V _{DC}
Battery:	Pb-Gel VRLA battery
Battery rating (C ₁₀₀ at 20° C):	up to 600Ah
Battery service life:	up to 12 years
Solar module:	up to 150pW
Lantern type ¹ :	depends on application
Operating temperature:	-25° ... +50° C
Storage temperature:	-40° ... +50° C
Rel. air humidity:	max. 98%
Degree of protection:	IP54 (acc. DIN 40050)
Dimensions (l x b x h):	600 x 600 x 1500 mm
Bolt hole circle:	Ø 330 mm
Fastening hole:	17 mm, slotted
Weight:	depends on design

Dimensions



¹ for detailed technical data review datasheet of marine lantern