

Order-Number
002 249 9xx 616



Application

Indication of fairways, turning points or junction points with other channels.

The **PINTSCH BAMAG** 3-Sector Direction Lights of the type **SFL 3 DC** are based on the optical projection principle and supplies 3 sectors in the colour white, red and green. These lights are used to indicate a fairway, a turning point or a junction point with other channels. Generally the white sector indicates the safe channel, the red and the green sector the restricted area of a fairway. The 3-Sector Direction Light of the type **SLF3 DC** is available in 6°, 12° or 24° horizontal light angle of aperture. Due to the use of halogen lamps from 5 to 100 W a wide field of operation is covered.

- Adjustable horizontal angle of aperture
(minimum adjustable angle of 0.2° at a setting accuracy of 0,1°)
- Electric flasher with 256 flash characters
- Twilight switch
- 6-place lamp changer

Optional:

- Telescope
- Telescope adjustment kit
- Horizontal fine adjustment kit
- GPS Synchronization



A02 249 900-954 (01/09 GB)

Technical data

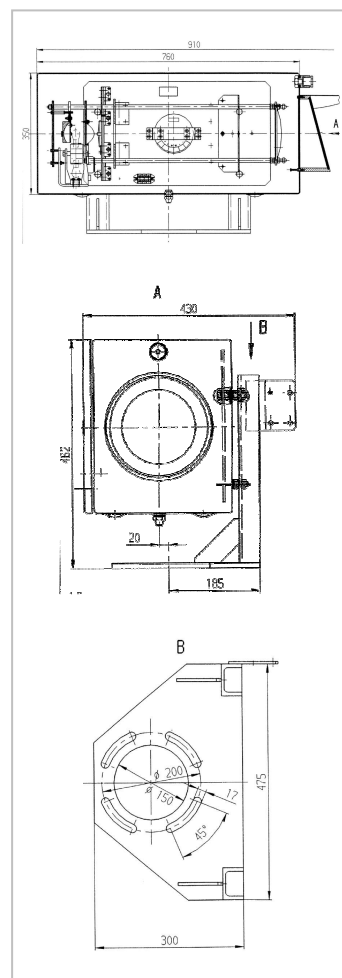
Nominal voltage: 12 / 24 V_{DC}
 Operating range: 10 – 30 V_{DC}
 Halogen lamp bulb (base P30s): 5, 10, 20, 35, 50 or 100 W
 Operating temperature: -25°... +55°C
 Storage temperature: -40°... +70°C
 Rel. Humidity: max. 98%
 Degree of protection: IP66 (according DIN 40050)
 Dimensions (l x b x h): 910 x 430 x 462 mm
 Weight: ca. 15 kg

Colour of light: according IALA (E-200-1, Optimum)

Light intensity: review table
 Transmission factor of colour filter:
 red > 21%
 green > 18%

Angel of aperture:
 Type SLF 3 - 6° ±3° ±2°
 Type SLF 3 - 12° ±6° ±4°
 Type SLF 3 - 24° ±12° ±8°

Dimensions



Light intensity I₀ [cd] of the white sector at fixed light

Max horizontal angle of aperture	I ₀ / cd bulb 5 W	I ₀ / cd bulb 10 W	I ₀ / cd bulb 20 W	I ₀ / cd bulb 35 W	I ₀ / cd bulb 50 W	I ₀ / cd bulb 100 W
6°	1.840	3.900	8.000	14.000	20.000	39.000
12°	460	975	2000	3.500	4.750	9.500
24°	115	240	500	875	1.150	2.375

Alterations reserved