



Order-Number
002 113 500-657



Application
Marking airports during
nighttime and bad weather
conditions.

The **PINTSCH BAMAG** Airport Rotary Beacon type **DL 150** is an aircraft leading light for airport landing approaches. The light output considerably exceeds that recommended by the ICAO (International Civil Aviation Organization), annex 14. The beacon can be operated with white light or optionally white and coloured light. For maritime navigational purposes the beacon finds application as a Front Range Light. The light will be operated by a 2,000 Watt halogen lamp and is equipped with a 2-place lampchanger.



A02 113 500-954 (05/09 GB)

Technical data

Electrical data:

| | |
|------------------------------|----------------------|
| Operating voltage: | 230 V _{AC} |
| Lamp bulb: | 2000 W on G38 base |
| Service life time lamp bulb: | min. 700 hour / each |

Environment:

| | |
|------------------------|-----------------|
| Operating temperature: | -25° ... +60° C |
| Storage & Transport: | -40° ... +80° C |
| Rel. humidity: | max. 98% |

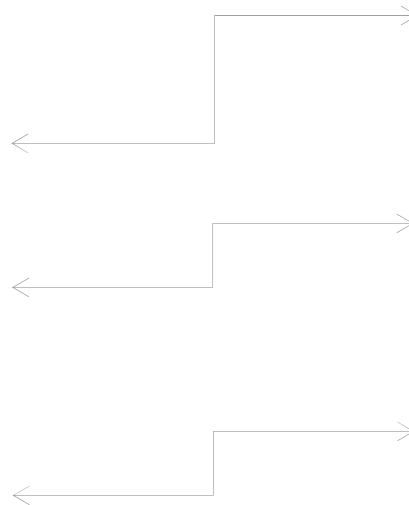
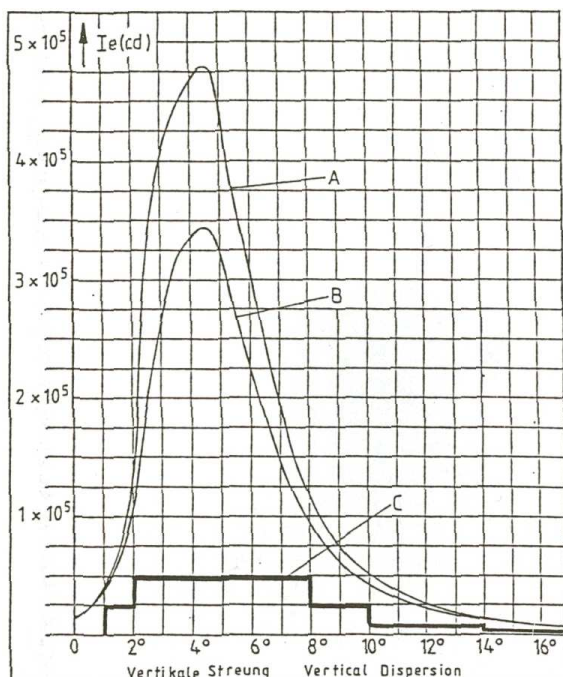
Mechanical data:

| | |
|-------------------------------|--------------------|
| Dimensions (Ø x h): | 930 x 1500 mm |
| Focal height: | 225 mm |
| Bolt hole circle: | 645 mm |
| Fastening holes: | 4 x Ø 21 mm |
| Fastening holes pitch circle: | Ø 640 mm |
| Lens material: | Cut polished glass |

Shipping data:

| | |
|------------------|--------------------|
| Net weight: | 145 kg |
| Shipping weight: | 315 kg |
| Shipping volume: | 2.5 m ³ |

Photometric data



Curve

A
effective light intensity I_e (cd)
mean value of both lens panels
for 12 flashes per minute

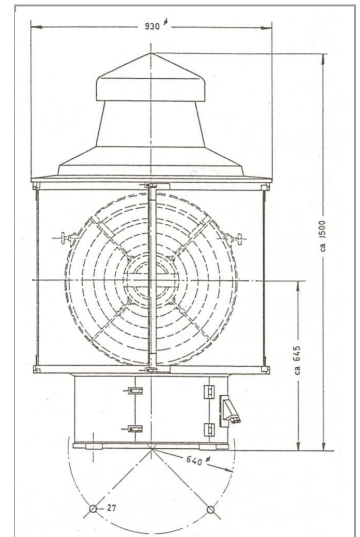
Curve

B
effective light intensity I_e (cd)
mean value of both lens panels
for 20 flashes per minute

Curve

C
light intensity I_e (cd) as
required by ICAO annex 14

Dimensions



Alterations reserved