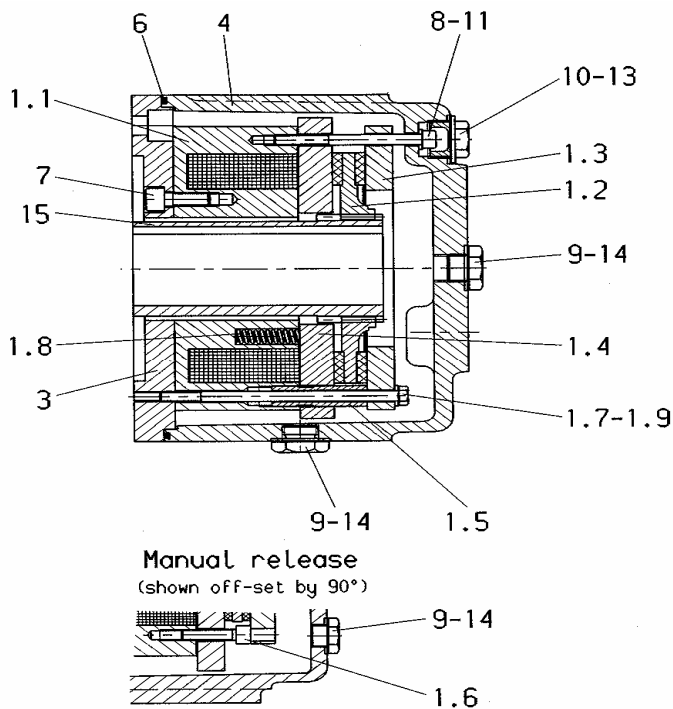


**Spare part list
Electromagnetic Spring-Set-Brake
Series KFB 10**



Please supply the following details when ordering spare parts:

- Dimension of the brake (type)
- Brake serial number
- Description of the spare part
- Quantity required
- Id.-No. of the spare part

Type, serial number of the brake and the coil voltage are specified on the rating plate.

Rating plate

PINTSCH BAMAG DINSLAKEN	
Bremse/Brake	_____
Moment/Torque	_____ Nm
_____ V DC	_____ A _____ W
Luftspalt/Airgap	_____ norm
Airgap	Off _____ max
Nr./No.	_____
Baujahr/Built	_____
Prüfung/Test	_____

)* pos.	description	qty.	dimension / standard	P.B. Id.-No.
X 1.1	coil body group	1	voltage see rating plate	<i>type specific</i>
1.2	friction lining group	1	D 133/d 56 x 15 19 teeth	001 111 000-214
1.3	brake flange	1	D 164/d 90 x 12	001 108 900-214
X 1.4.1	armature plate	1	D 174/d 64 x 15	001 108 500-214
X 1.4.2	armature plate group f. 1MS/PS	1	D 174/d 64 x 15	001 159 500-214
X 1.4.3	armature plate group f. 2MS/PS	1	D 174/d 64 x 15	001 159 600-214
1.5	adjusting bolt	3	D 12/M 12x1 x 42	001 111 100-214
1.6	socket head screw TUF-LOC	2	M 6x30 / ISO 4762	031 411 778-200
1.7	hexagon screw	3	M 6x105 / ISO 4014	031 021 385-100
1.8	pressure spring	20	D 8 x 36	047 010 008-004
1.9	circlip	3	VSKD 6 / BN 208012	037 424 126-000
X 3.0.1	adaptor flange	1	standard flange A200	001 108 300-214
X 3.0.2		1	standard flange A250	001 108 400-214
X 3.0.3		1	special flange	<i>type specific</i>
X 4.0.1	housing	1	normal type A200	001 105 500-214
X 4.0.2		1	normal type A250	001 106 300-214
X 4.0.3		1	special housing	<i>type specific</i>
X 6.0.1	O-ring f. housing A200	1	179 x 3 NBR	042 572 235-000
X 6.0.2	O-ring f. housing A250	1	230 x 3 NBR	042 572 432-100
7	socket head screw	4	M 8x20 / ISO 4762	031 411 126-000
8	socket head screw	3	M 6x65 / ISO 4762	031 411 115-100
9	lock bolt	6	M 16x1,5 / DIN 7604	032 410 210-000
10	lock bolt	3	M 22x1,5 / DIN 7604	032 410 214-000
11	washer	3	B 6,4 / DIN 9021-140HV-A2	037 038 320-000
13	sealing ring	3	A 22x29 / DIN 7603	042 524 088-000
14	sealing ring	6	A 16x20 / DIN 7603	042 524 064-000
X 15	hub (pinion)	1		<i>type specific</i>

)*: For ordering spare parts marked with X, please specify the serial number of the brake printed on the rating plate.

Note: Positions with three digits (f.e. 1.2.3) are possible variants. The installed variant depends on the type of the brake.

Additional equipment: To order spare parts for additional equipment like lever for manual release, side-fitting connection box, micro- or proximity switch, it is necessary to specify the serial number of the brake.

Datum 23.03.2007	erstellt VK/Thonen	geprüft VK / THO	ÄM-Nr. B / 4-Tho07032	a01 076 000-958
---------------------	-----------------------	---------------------	--------------------------	------------------------