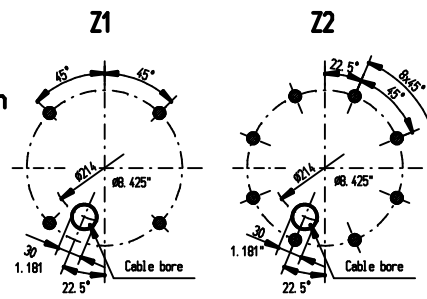
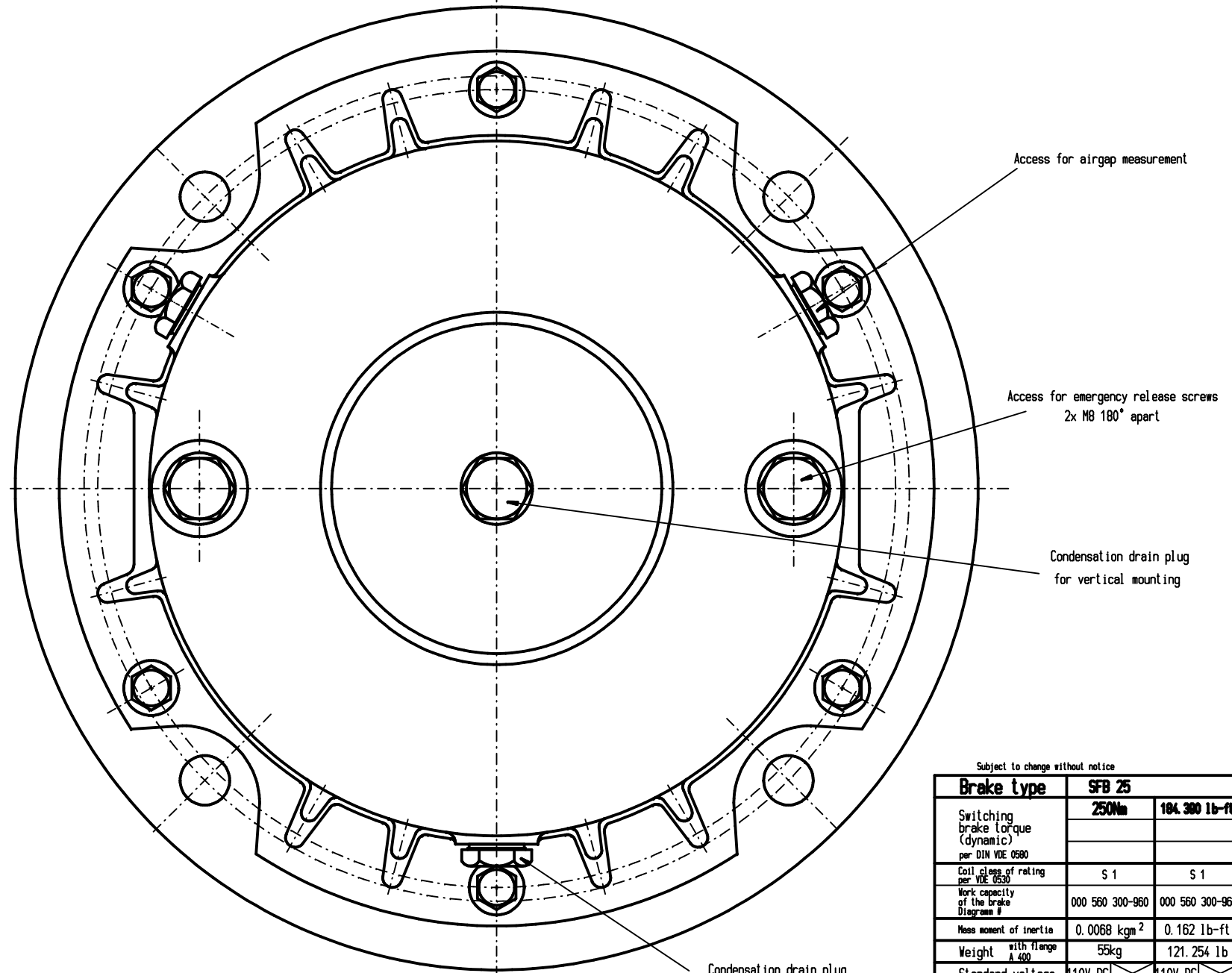


Intermediate flange - bolt pattern
View X

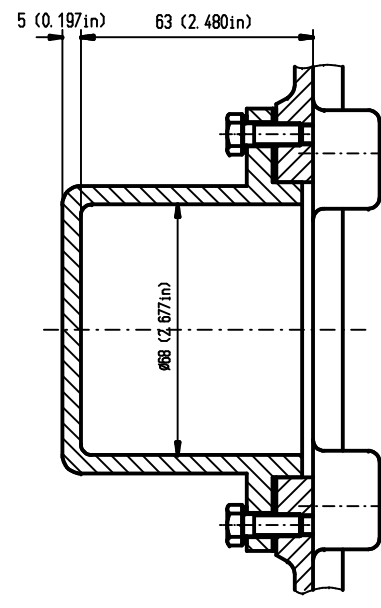
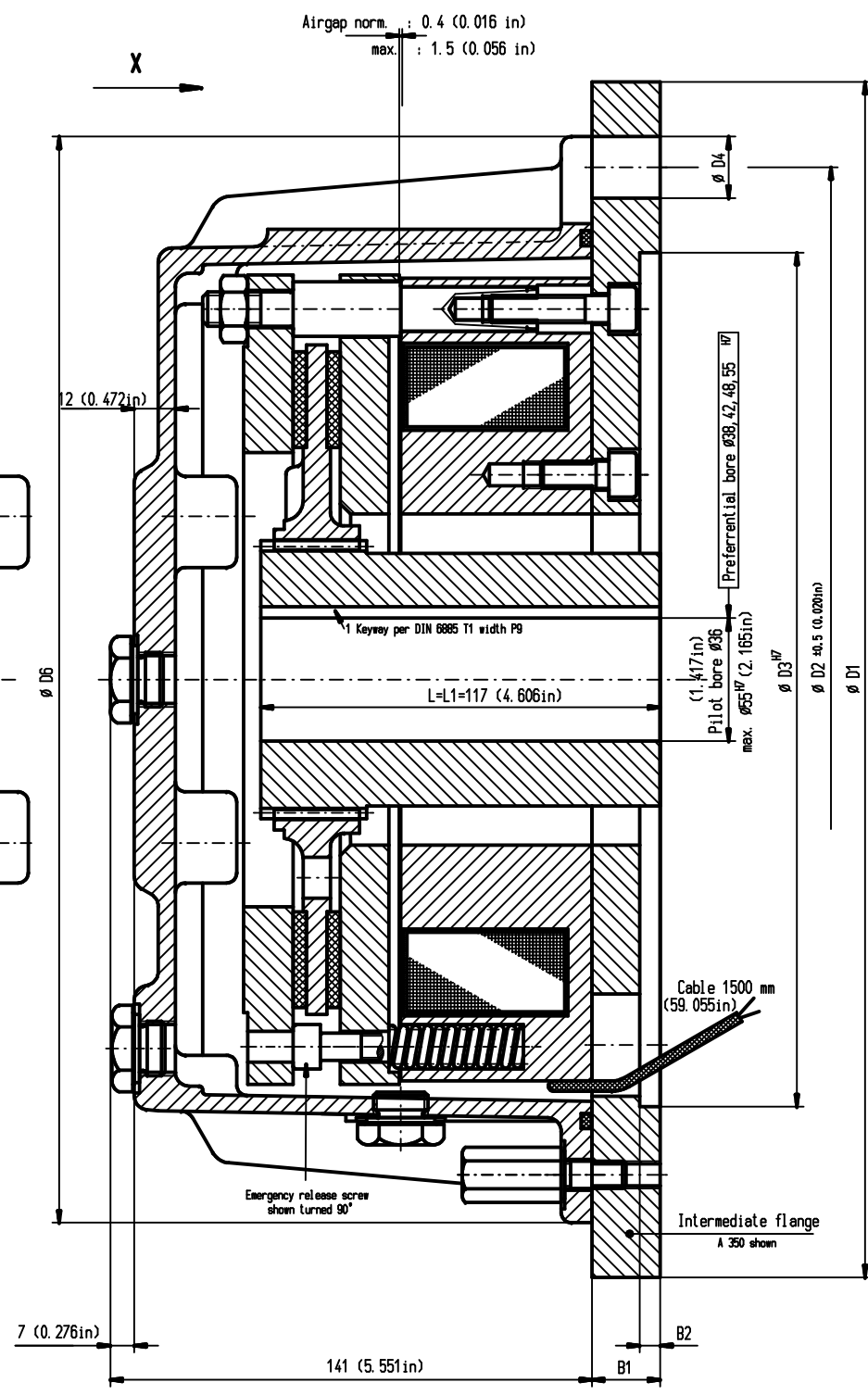


Size	Part#	Unit	Flange Dimensions						B1	B2
			D1	D2	D3	D4	D6			
A350	000 595 100-214	mm in	350 13.780	300 11.811	250 9.843	18 0.709	318 12.120	Z1 20 0.787	6 0.236	
A400	000 595 200-214	mm in	400 15.748	350 13.780	300 11.811	18 0.709	318 12.120	Z1 22 0.866	6 0.236	
A450	000 659 200-214	mm in	450 17.717	400 15.748	350 13.780	18 0.709	318 12.120	Z2 24 0.945	6 0.236	
A550	000 724 600-214	mm in	550 21.653	500 19.685	450 17.717	18 0.709	318 12.120	Z2 24 0.945	6 0.236	

Brake shown in standard mounting position



Special flange, bore and voltage available at additional cost.



Protective cover for extended motor shaft

Subject to change without notice

Brake type	SFB 25	
Switching brake torque (dynamic) per DIN VDE 0580	250Nm	184.300 lb-ft
Coil class of rating per VDE 0530	S 1	S 1
Work capacity of the brake Diagram #	000 560 300-960	000 560 300-960
Mass moment of inertia	0.0068 kgm ²	0.162 lb-ft ²
Weight with flange A 400	55kg	121.254 lb
Standard voltage	110V DC	110V DC
Special voltage		
Coil capacity	196W	0.263 hp

Verwendbar für		Anzahl	
Maßstab	1:1	Gewicht	
Hersteller	Delum	Bestell-Nr.	000 594 350-951
Bezeichnung	Sensoren-protected electromagnetic-brake	Blatt	01
Version	SFB 25	Standard flange	
Urspr.	MEUSA 21.4.98	Ers. f.	

Wir garantieren keine Haftung für Schäden, die durch den Einsatz unserer Produkte entstehen. Wir übernehmen keine Haftung für Schäden, die durch den Einsatz unserer Produkte entstehen.

Customer follow all applicable safety and installation regulations