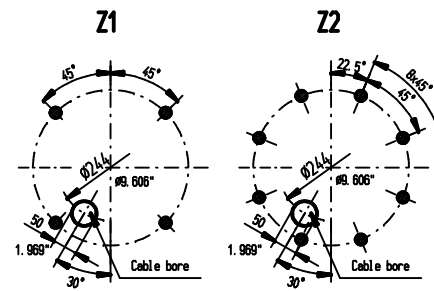
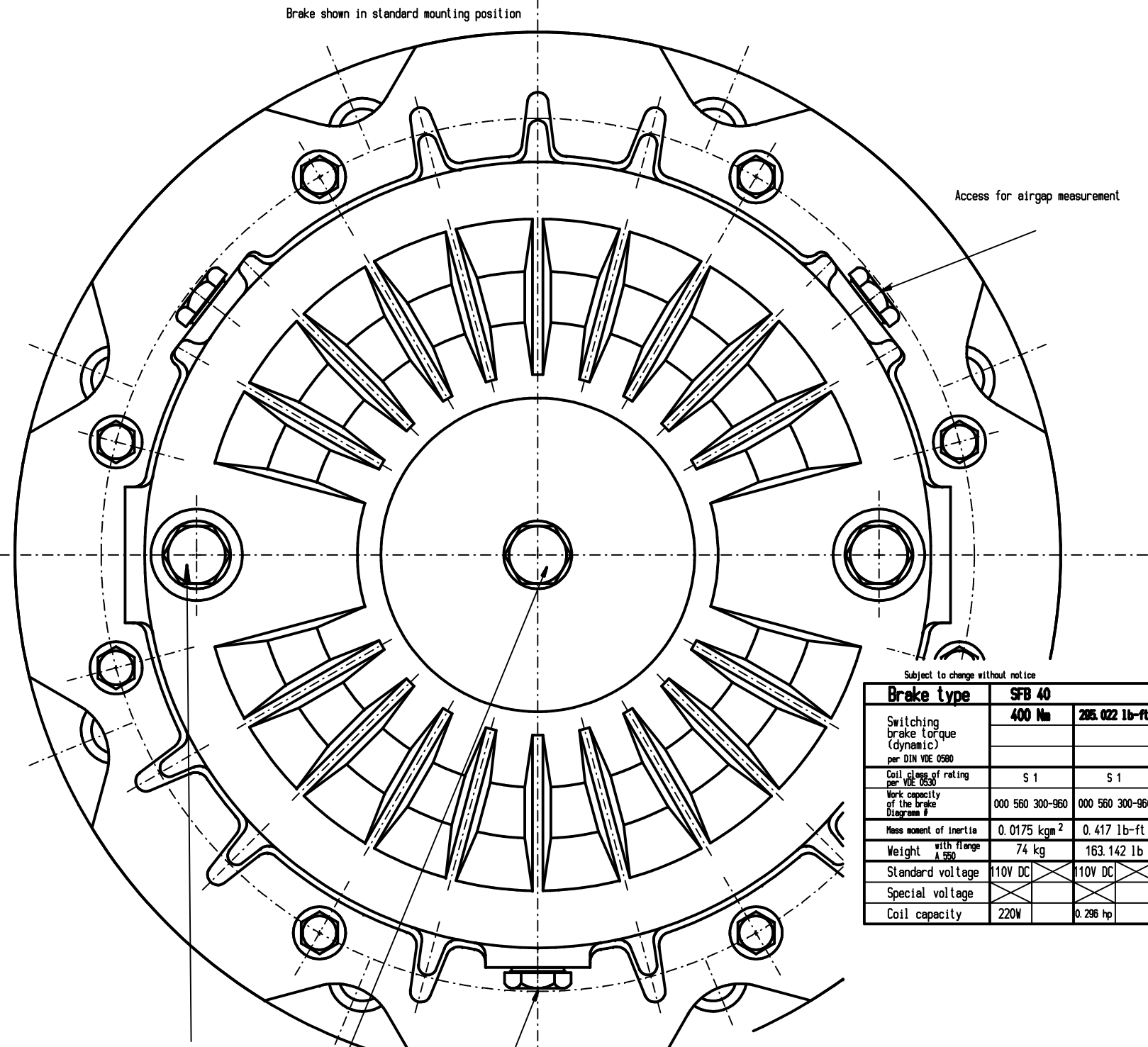
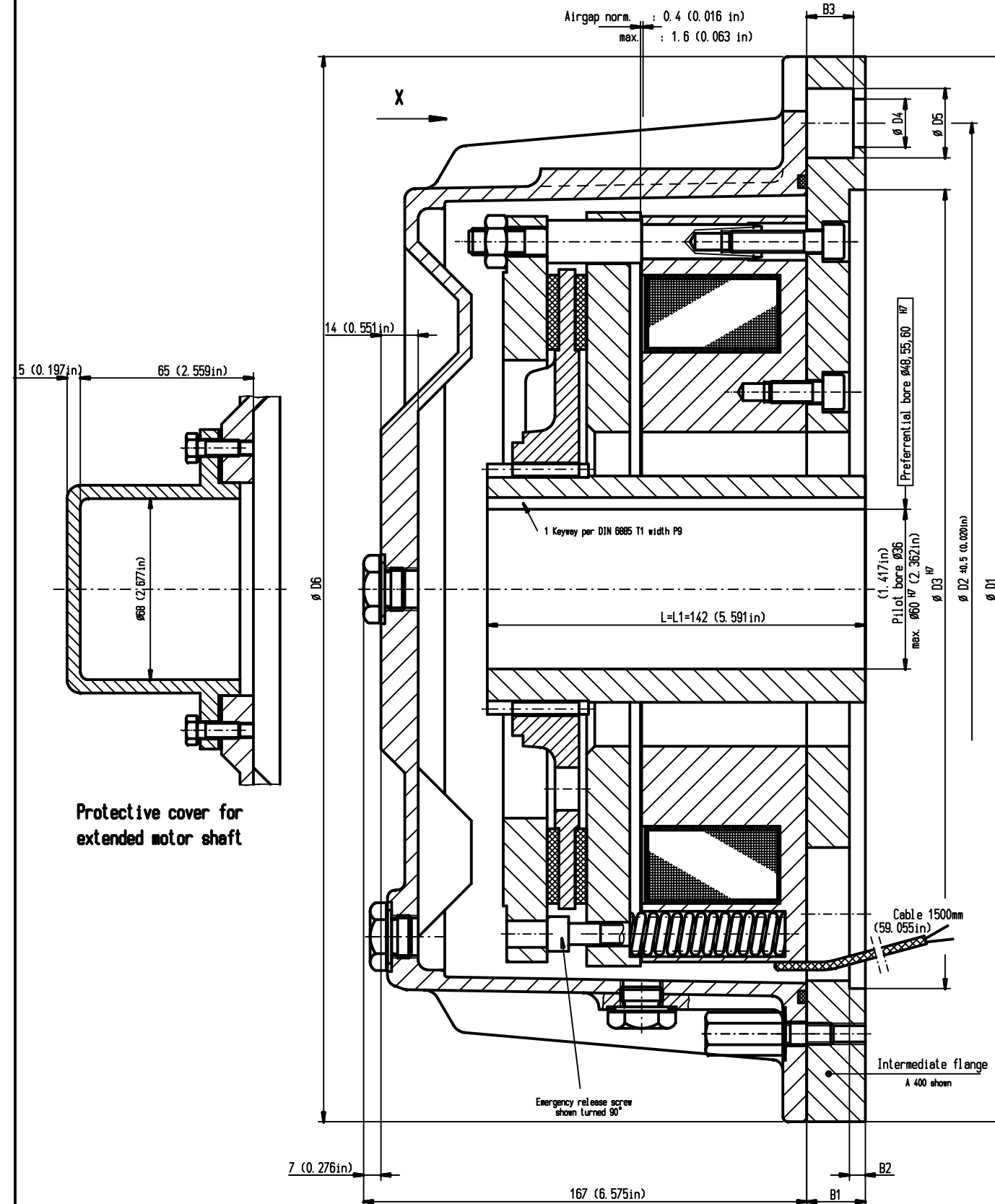


Intermediate flange - bolt pattern
View X



Special flange, bore and voltage available at additional cost.

Intermediate flange		Flange Dimensions												
Size	Part#	Unit	D1	D2	D3	D4	D5	D6		B1	B2	B3		
A350	000 734 300-214	mm in	350 13.780	300 11.811	250 9.843	18 0.709	30 1.181	350 13.780		Z1	22 0.866	6 0.236	17.5 0.690	
A400	000 593 800-214	mm in	400 15.748	350 14.285	300 11.811	18 0.709	26 1.024	400 15.748		Z1	22 0.866	6 0.236	17.5 0.690	
A450	000 593 900-214	mm in	450 17.717	400 15.748	350 14.285	18 0.709	18 0.709	400 15.748		Z2	24 0.945	6 0.236	0	
A550	000 594 000-214	mm in	550 21.653	500 19.685	450 17.717	18 0.709	18 0.709	400 15.748		Z2	24 0.945	6 0.236	0	



Subject to change without notice

Brake type	SFB 40	
Switching brake torque (dynamic) per DIN VDE 0580	400 Nm	295.022 lb-ft
Coil class of rating per VDE 0530	S 1	S 1
Work capacity of the brake Diagram 7	000 560 300-960	000 560 300-960
Mass moment of inertia	0.0175 kgm ²	0.417 lb-ft ²
Weight with flange A 550	74 kg	163.142 lb
Standard voltage	110V DC	110V DC
Special voltage		
Coil capacity	220W	0.296 hp

Veränder für

Hersteller	Wabtec	Maßstab	1:1	Gewicht	
Teilenummer	000 590 150-951				
Bezeichnung	Seewasser-protected electromagnetic-brake SFB 40 Standard Flange				
Blatt	01				

A 4-Vej 03002 19.02.2003 Vaj
 Cust. Änderung Delum Name Urspr. MEDUSA 22.4.98 Ers. f.: Ers. d.:

Customer must follow all applicable safety and installation regulations

Wabtec AG, 42699 Solingen, Germany. All rights reserved. Wabtec AG is a registered trademark of Wabtec AG. All other trademarks are the property of their respective owners. © 2003 Wabtec AG.