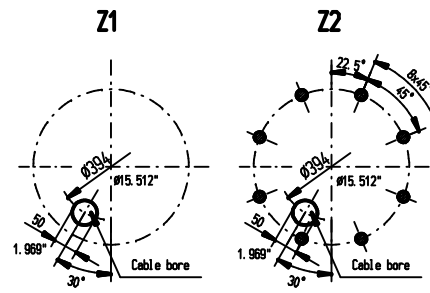
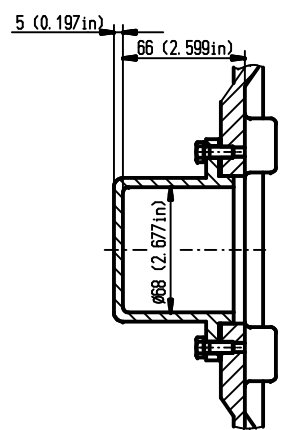
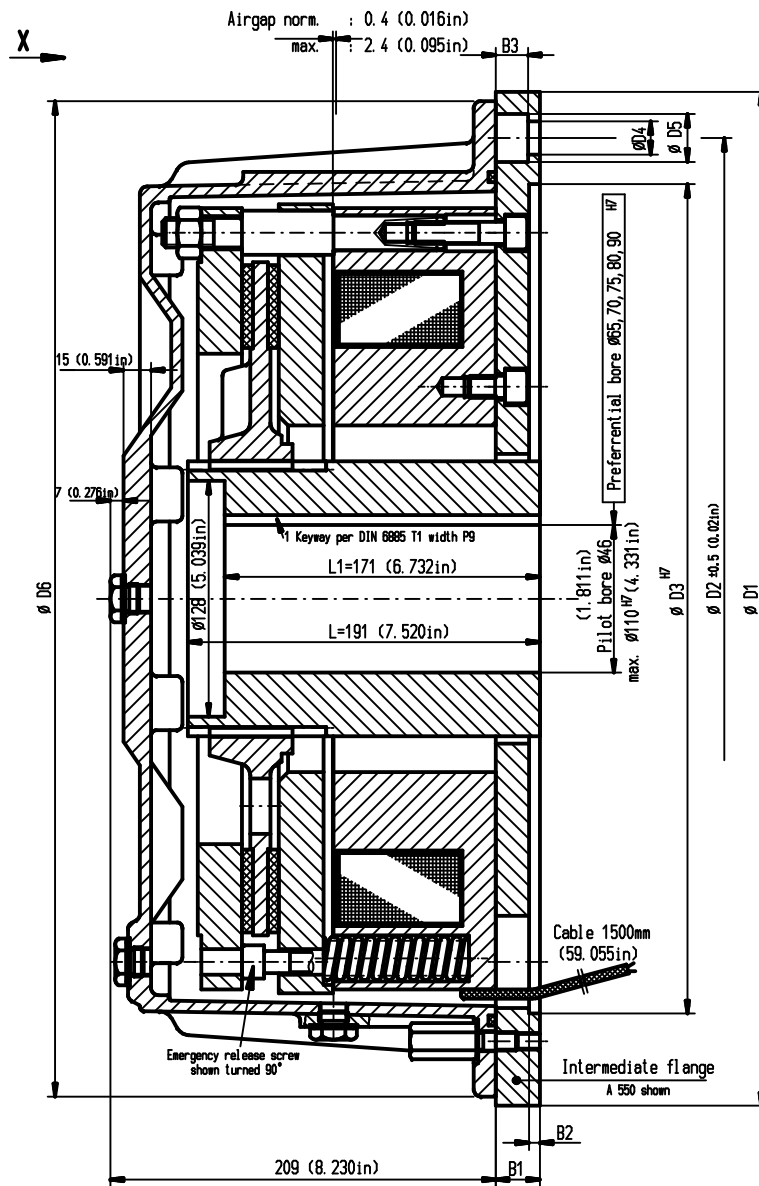


Intermediate flange - bolt pattern  
View X

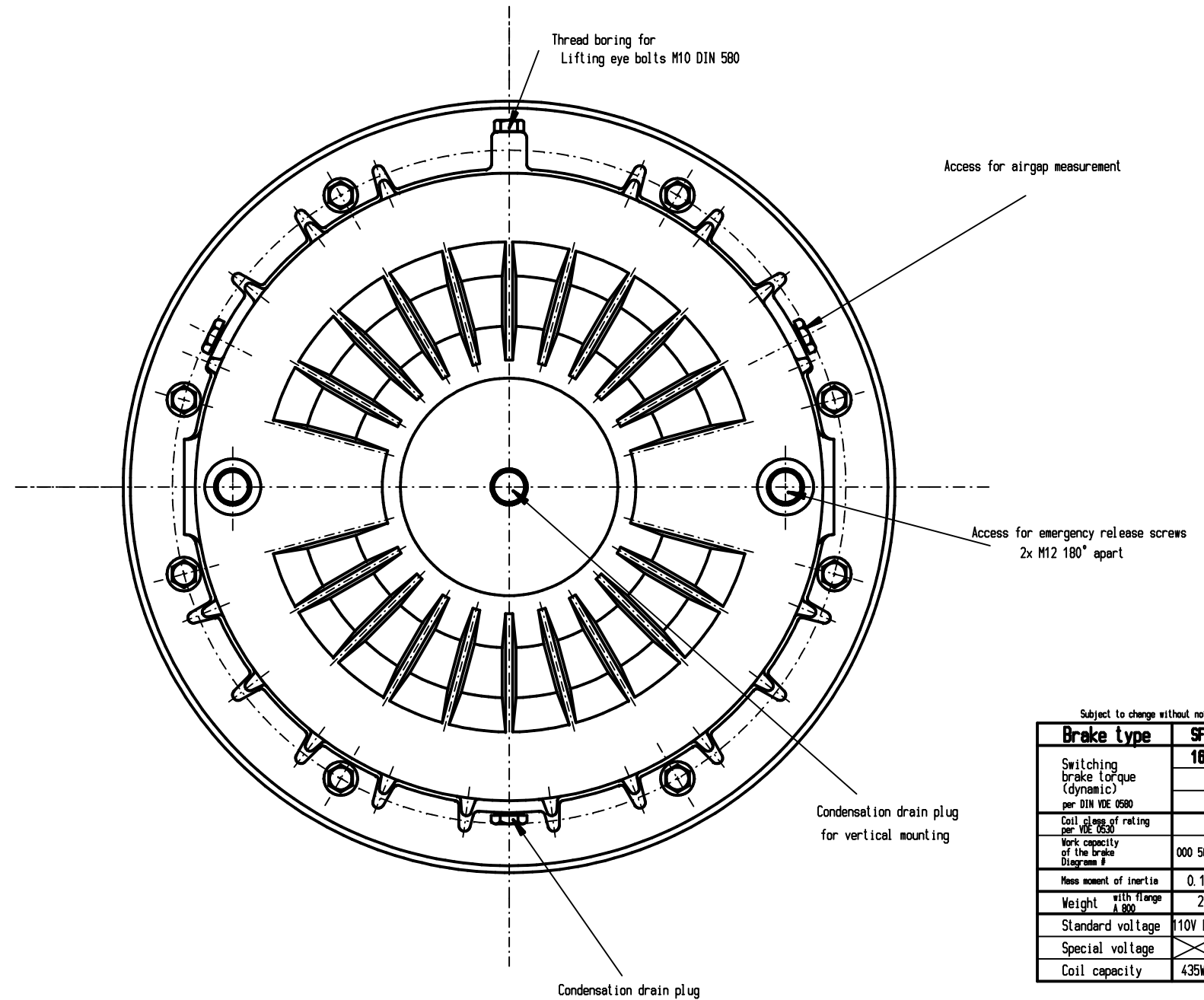


Intermediate flange		Flange Dimensions											
Size	Part#	Unit	D1	D2	D3	D4	D5	D6		B1	B2	B3	
A550	000 588 500-214	mm in	550 25.653	500 19.685	450 17.717	18 0.709	26 1.024	540 21.260		Z2	24 0.945	6 0.236	17.5 0.690
A660	000 588 600-214	mm in	660 25.984	600 23.622	550 25.653	22 0.866	22 0.866	540 21.260		Z2	30 1.181	7 0.276	0
A800	000 588 700-214	mm in	800 31.497	740 29.134	680 26.772	22 0.866	22 0.866	540 21.260		Z2	30 1.181	7 0.276	0

Brake shown in standard mounting position



Protective cover for  
extended motor shaft



Subject to change without notice

Brake type	SFB 160	
Switching brake torque (dynamic) per DIN VDE 0580	1600 Nm	1180.089 lb-ft
Coil class of rating per VDE 0530	S 1	S 1
Work capacity of the brake Diagram #	000 580 300-960	000 580 300-960
Mass moment of inertia	0.128 kgm <sup>2</sup>	3.048 lb-ft <sup>2</sup>
Weight with flange A 600	242 kg	533.521 lb
Standard voltage	110V DC	110V DC
Special voltage		
Coil capacity	435W	0.584 hp

Special flange, bore and voltage  
available at additional cost.

Customer follow all applicable safety  
and installation regulations

Verwendbar für		Anzahl		Gewicht	
Teilenummer		Maßstab 1:2			
Hersteller		DIN 150 1302			
Bearb. 16.02.2003		Vajic		Sensitiv-protected electromagnetic-brake	
Gepr. 04.03.2003		Thoren		SFB 160	
Norm		A1		Standard flange	
A 4-Vaj03002		20.02.2003		000 588 350-951	
Zust. Änderung		Delus		Ers. f.:	
Urspr. MEDUSA 24,4,98		Ers. d.:		Blatt 01	